

ESPN
**European Society
for Paediatric Nephrology**



ESPN

Our Mission

ESPN was founded in 1967 to promote and disseminate knowledge in paediatric nephrology through research, teaching, scientific meetings, networking, and collaborative activities.

By bringing together clinical professionals and researchers ESPN encourages a strong European paediatric nephrology community.

Our ultimate mission is to advance the care of children with kidney diseases in Europe and beyond.

ESPN

Who We Are

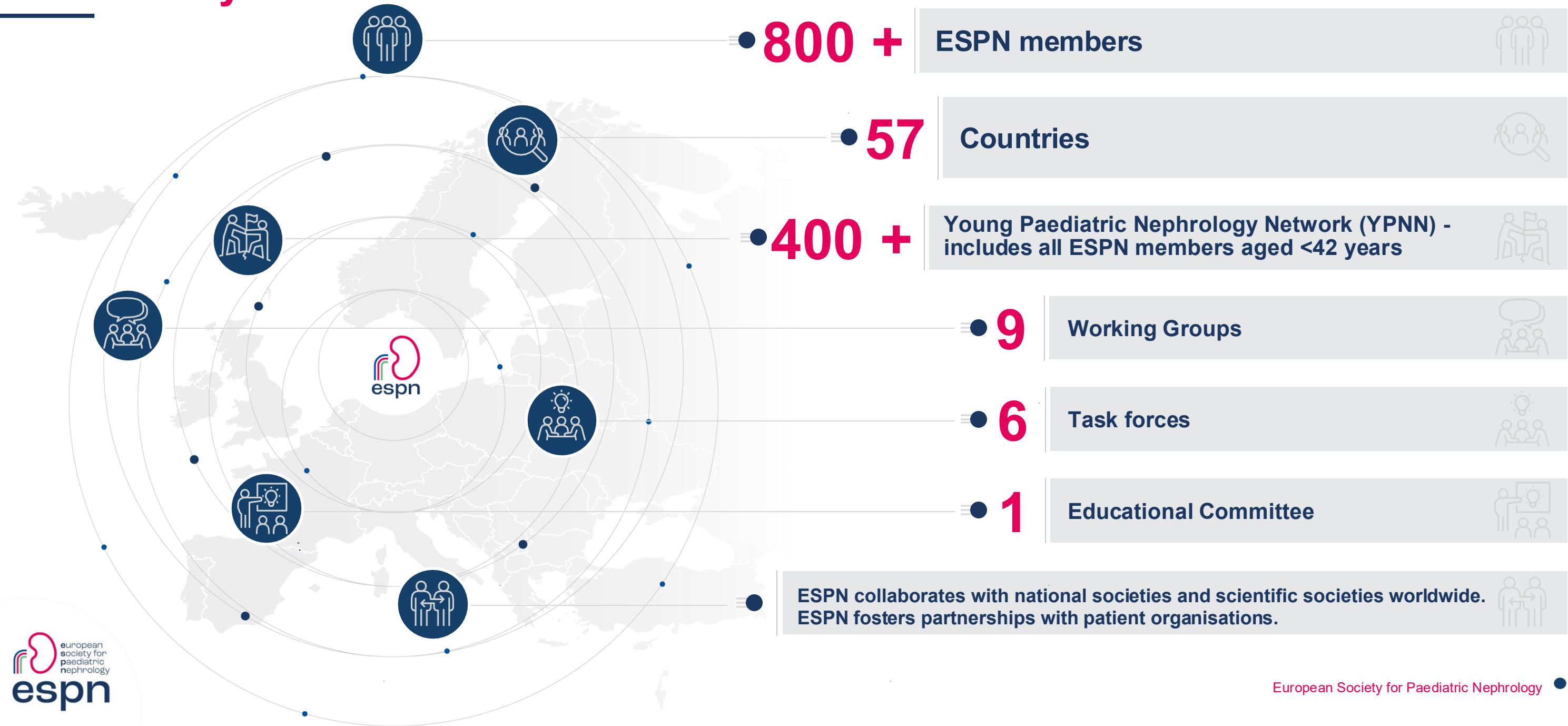
ESPN is a volunteer-led, nonprofit, charitable medical society. It is an independent, non-governmental organisation.

ESPN is the main scientific society for healthcare providers and researchers dedicated to Paediatric Nephrology across Europe.

ESPN is a diverse and inclusive Society in all aspects of its activities.

All individuals operating within ESPN must disclose annually their potential conflicts of interest.

ESPN
Community



ESPN

Activities

Working groups

- CAKUT / UTI / bladder dysfunction
- Chronic kidney disease – mineral bone disorder (CKD-MBD)
- Dialysis
- Glomerular diseases
- Hypertension
- Inherited kidney disease
- Meta-Research and Quality of Evidence
- Neonatal Nephrology
- Transplantation

Task forces

- Disaster
- Fundraising
- Green Nephrology
- History
- Paediatric Renal Nutrition
- Transition

Educational Committee

Young Paediatric Nephrology Network (YPNN)



Scientific Meetings

- ESPN Annual Meeting / Paediatric Kidney Week
- ESPN Research Conference
- Participation in meetings organised by other societies

Grants

- General Research Grant
- Working Group Grant
- Young Investigator Award
- Training grants
- PNRC and ESPN research grants

Honors and Awards

- Fellow of the European Society for Paediatric Nephrology (FESPN)
- Honorary Membership
- Golden Kidney Award

PUBLICATIONS



RESEARCH



EDUCATION



TRAINING



Research and Publications

- Promote research and guideline projects initiated by ESPN WGs
- Promote ESPN/ERA Registry and other research collaborations
- Endorsement of research projects, guidelines, and other publications

Education and Training

- ESPN certificate in Paediatric Nephrology (ESPN Board Examination)
- IPNA-ESPN Junior Master Classes and IPNA-ESPN Master Certificate
- Joint webinars with ERKNet and IPNA
- Mentorship program

ESPN collaborates with...

Other societies & networks within Europe

- European Paediatric Association (EPA)
- European Rare Kidney Diseases Network (ERKNet)
- European Renal Association (ERA)
- European Society for Paediatric Urology (ESPU)
- National Paediatric Nephrology Societies

International/regional societies & networks

- International Pediatric Nephrology Association (IPNA)
- International Pediatric Transplant association (IPTA)
- International Society of Nephrology (ISN)
- Pediatric Nephrology Research Consortium (PNRC)
- African Paediatric Nephrology Association (AFPNA)
- American Society of Pediatric Nephrology (ASPNA)
- Asian Pediatric Nephrology Association (AsPNA)
- Japanese Society for Pediatric Nephrology (JSPN)
- Korean Society of Pediatric Nephrology (KSPN)

Patient Organizations and Patient Advocates

The ESPN

Organisational Structure and Governance

ESPN Council

EXECUTIVE
COUNCILLORS



President
Dieter Haffner
Hannover, Germany



Assistant President
Francesco Emma
Rome, Italy



Treasurer
Jun Oh
Hamburg, Germany

COUNCIL
MEMBERS



Arend Bökenkamp
Amsterdam, NL



Ayşe Balat
Gaziantep, Türkiye



Karolis Azukaitis
Vilnius, Lithuania



Lars Pape
Essen, Germany



Leire Madariaga
Bilbao, Spain



Malgorzata Mizerska-Wasiak
Warsaw, Poland



Matko Marlais
London, UK



Umut Selda Bayrakci
Ankara, Türkiye

Ex officio ESPN
Council Members /
Chair positions

ESPN Annual Congress

Local President: **Stella Stabouli**
Thessaloniki, Greece

Scientific President: **Francesco Emma**
Rome, Italy

ESPN Research Conference

Scientific co-chair: **Marina Vivarelli**
Rome, Italy

Scientific co-chair: **Nicole van de Kar**
Nijmegen, the Netherlands

ESPN/ERA Registry

Chair: **Sevcan Bakkaloglu**
Ankara, Turkey

Vice-chair: **Julien Hogan**
Paris, France

Young Paediatric Nephrology Network (YPNN)

Chair: **Rute Baeta Baptista**
Lisbon, Portugal

Vice-chair: **Maria Daniel**
Warsaw, Poland

ESPN Working Groups chairs

CAKUT/UTI/bladder dysfunction
Julia Hoefele - Munich, Germany

**Chronic kidney disease/mineral
and bone disorders (CKD-MBD)**
Justine Bacchetta - Lyon, France

Dialysis
Rukshana Shroff - London, UK

Glomerular diseases
Louise Oni - Liverpool, UK

Hypertension
Stella Stabouli - Thessaloniki, Greece

Inherited kidney disease
Max Liebau - Cologne, Germany

Meta-Research and Quality of Evidence
Jun Oh - Hamburg, Germany
Karolis Azukaitis - Vilnius, Lithuania

Neonatal nephrology
Lieke Hoogenboom - Bristol, UK

Transplantation
Lars Pape - Essen, Germany

ESPN task forces coordinators

Disaster Task Force
Elena Levchenko - Amsterdam, NL
Jun Oh - Hamburg, Germany
Rukshana Shroff - London, UK

Fundraising Task Force
Stella Stabouli - Thessaloniki, Greece
Jun Oh - Hamburg, Germany

Green Nephrology Task Force
Rukshana Shroff - London, UK
Aysun Karabay Bayazit - Adana, Türkiye

History Task Force
Elena Levchenko - Amsterdam, NL
Evgenia Preka - Paris, France
Jochen Ehrich - Hannover, Germany

Paediatric Renal Nutrition Taskforce
Fabio Paglialonga - Milan, Italy
Vanessa Shaw - London, UK

Transition task force
Jun Oh - Hamburg, Germany
Lars Pape - Essen, Germany

ESPN committees chairs

Education Committee
Elena Levchenko - Amsterdam, NL

Why should you become an ESPN member?

- 1| Access to ESPN endorsed research initiatives, publications, education materials, scientific meetings, courses, webinars, and newsletters
- 2| Discounts on registration fees
- 3| Access to participate in ESPN Working Groups
- 4| Access to Young Paediatric Nephrology Network membership benefits if age <42 years
- 5| Access to ESPN Training, Travel and Research grants after successful application
- 6| ESPN scientific endorsement for national congresses, workshops and other educational activities on a national level
- 7| Access to the Journal of Pediatric Nephrology & combined membership with IPNA (based on registration type)
- 8| Access and voting privilege at the Annual General Assembly and online elections
- 9| Active participation in the decision-making policies of the Society
- 10| Support humanitarian actions

Collaborate with ESPN

Corporate

Industry support is paramount to promote our ongoing and new activities.

We have developed cooperate partnership contracts: platinum, gold, and silver.

We are also open to exploring short-term partnerships and welcome individual requests for specific projects.

For further information please contact us:
secretaryespn@oic.it



To renew your membership or join ESPN scan here



To know more about ESPN visit our webiste
www.espn-online.org