

**ESPN**  
**European Society**  
**for Paediatric Nephrology**

---



# ESPN

## Our Mission

**ESPN** was founded in 1967 to promote and disseminate knowledge in paediatric nephrology through research, teaching, scientific meetings, networking, and collaborative activities.

By bringing together clinical professionals and researchers ESPN encourages a strong European paediatric nephrology community.

Our ultimate mission is to advance the care of children with kidney diseases in Europe and beyond.



# ESPN

## Who We Are

**ESPN** is a volunteer-led, nonprofit, charitable medical society. It is an independent, non-governmental organisation.

ESPN is the main scientific society for healthcare providers and researchers dedicated to Paediatric Nephrology across Europe.

ESPN is a diverse and inclusive Society in all aspects of its activities.

All individuals operating within ESPN must disclose annually their potential conflicts of interest.

# ESPN Community



# ESPN Activities

## Working groups

- CAKUT / UTI / bladder dysfunction
- Chronic kidney disease – mineral bone disorder (CKD-MBD)
- Dialysis
- Glomerular diseases
- Hypertension
- Inherited kidney disorders
- Meta-Research and Quality of Evidence
- Neonatal Nephrology
- Transplantation

## Task forces

- Disaster
- Fundraising
- Green Nephrology
- History
- Paediatric Renal Nutrition
- Transition

## Educational Committee

## Young Paediatric Nephrology Network (YPNN)



## Scientific Meetings

- ESPN Annual Meeting / Paediatric Kidney Week
- ESPN Research Conference
- Participation in meetings organised by other societies

## Grants

- General Research Grant
- Working Group Grant
- Young Investigator Award
- Training grants
- PNRC and ESPN research grants

## Honors and Awards

- Fellow of the European Society for Paediatric Nephrology (FESPN)
- Honorary Membership
- Golden Kidney Award

## PUBLICATIONS



## RESEARCH



## EDUCATION



## TRAINING



## Research and Publications

- Promote research and guideline projects initiated by ESPN WGs
- Promote ESPN/ERA Registry and other research collaborations
- Endorsement of research projects, guidelines, and other publications

## Education and Training

- ESPN certificate in Paediatric Nephrology (ESPN Board Examination)
- IPNA-ESPN Junior Master Classes and IPNA-ESPN Master Certificate
- Joint webinars with ERKNet and IPNA
- Mentorship program

ESPN collaborates with...

## Other societies & networks within Europe

- European Paediatric Association (EPA)
- European Rare Kidney Diseases Network (ERKNet)
- European Renal Association (ERA)
- European Society for Paediatric Urology (ESPU)
- National Paediatric Nephrology Societies

## International/regional societies & networks

- International Pediatric Nephrology Association (IPNA)
- International Pediatric Transplant association (IPTA)
- International Society of Nephrology (ISN)
- Pediatric Nephrology Research Consortium (PNRC)
- African Paediatric Nephrology Association (AFPNA)
- American Society of Pediatric Nephrology (ASPEN)
- Asian Pediatric Nephrology Association (AsPNA)
- Japanese Society for Pediatric Nephrology (JSPN)
- Korean Society of Pediatric Nephrology (KSPN)

## Patient Organizations and Patient Advocates



The ESPN

# Organisational Structure and Governance

ESPN Council

EXECUTIVE COUNCILLORS



President  
**Dieter Haffner**  
Hannover, Germany



Assistant President  
**Francesco Emma**  
Rome, Italy



Treasurer  
**Jun Oh**  
Hamburg, Germany

COUNCIL MEMBERS



**Arend Bökenkamp**  
Amsterdam, NL



**Ayşe Balat**  
Gaziantep, Türkiye



**Karolis Azukaitis**  
Vilnius, Lithuania



**Lars Pape**  
Essen, Germany



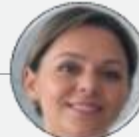
**Leire Madariaga**  
Bilbao, Spain



**Malgorzata Mizerska-Wasiak**  
Warsaw, Poland



**Matko Marlais**  
London, UK



**Umut Selda Bayrakci**  
Ankara, Türkiye

Ex officio ESPN  
Council Members /  
Chair positions

ESPN Annual Congress

Local President: **Stella Stabouli**  
Thessaloniki, Greece

Scientific President: **Francesco Emma**  
Rome, Italy

ESPN Research Conference

Scientific co-chair: **Marina Vivarelli**  
Rome, Italy

Scientific co-chair: **Nicole van de Kar**  
Nijmegen, the Netherlands

ESPN/ERA Registry

Chair: **Sevcan Bakkaloglu**  
Ankara, Turkey

Vice-chair: **Julien Hogan**  
Paris, France

Young Paediatric Nephrology Network (YPNN)

Chair: **Rute Baeta Baptista**  
Lisbon, Portugal

Vice-chair: **Maria Daniel**  
Warsaw, Poland

ESPN Working Groups chairs

**CAKUT/UTI/bladder dysfunction**  
Julia Hoefele - Munich, Germany

**Chronic kidney disease/mineral and bone disorders (CKD-MBD)**  
Justine Bacchetta - Lyon, France

**Dialysis**  
Rukshana Shroff - London, UK

**Glomerular diseases**  
Louise Oni - Liverpool, UK

**Hypertension**  
Stella Stabouli - Thessaloniki, Greece

**Inherited kidney disorders**  
Max Liebau - Cologne, Germany

**Meta-Research and Quality of Evidence**  
Jun Oh - Hamburg, Germany  
**Karolis Azukaitis** - Vilnius, Lithuania

**Neonatal nephrology**  
Lieke Hoogenboom - Bristol, UK

**Transplantation**  
Lars Pape - Essen, Germany

ESPN task forces coordinators

**Disaster Task Force**  
Elena Levthchenko - Amsterdam, NL  
Jun Oh - Hamburg, Germany  
Rukshana Shroff - London, UK

**Fundraising Task Force**  
Stella Stabouli - Thessaloniki, Greece  
Jun Oh - Hamburg, Germany

**Green Nephrology Task Force**  
Rukshana Shroff - London, UK  
Aysun Karabay Bayazit - Adana, Türkiye

**History Task Force**  
Elena Levthchenko - Amsterdam, NL  
Evgenia Preka - Paris, France  
Jochen Ehrich - Hannover, Germany

**Paediatric Renal Nutrition Taskforce**  
Fabio Paglialonga - Milan, Italy  
Vanessa Shaw - London, UK

**Transition task force**  
Jun Oh - Hamburg, Germany  
Lars Pape - Essen, Germany

ESPN committees chairs

**Education Committee**  
Elena Levthchenko - Amsterdam, NL



# Why should you become an ESPN member?

- 1| Access to ESPN endorsed research initiatives, publications, education materials, scientific meetings, courses, webinars, and newsletters
- 2| Discounts on registration fees
- 3| Access to participate in ESPN Working Groups
- 4| Access to Young Paediatric Nephrology Network membership benefits if age <42 years
- 5| Access to ESPN Training, Travel and Research grants after successful application
- 6| ESPN scientific endorsement for national congresses, workshops and other educational activities on a national level
- 7| Access to the Journal of Pediatric Nephrology & combined membership with IPNA (based on registration type)
- 8| Access and voting privilege at the Annual General Assembly and online elections
- 9| Active participation in the decision-making policies of the Society
- 10| Support humanitarian actions

# Collaborate with ESPN

## Corporate

Industry support is paramount to promote our ongoing and new activities.

We have developed cooperate partnership contracts: platinum, gold, and silver.

We are also open to exploring short-term partnerships and welcome individual requests for specific projects.

For further information please contact us:  
[secretaryespn@oic.it](mailto:secretaryespn@oic.it)



To renew your membership or join ESPN scan here

---



To know more about ESPN visit our website  
[www.espn-online.org](http://www.espn-online.org)